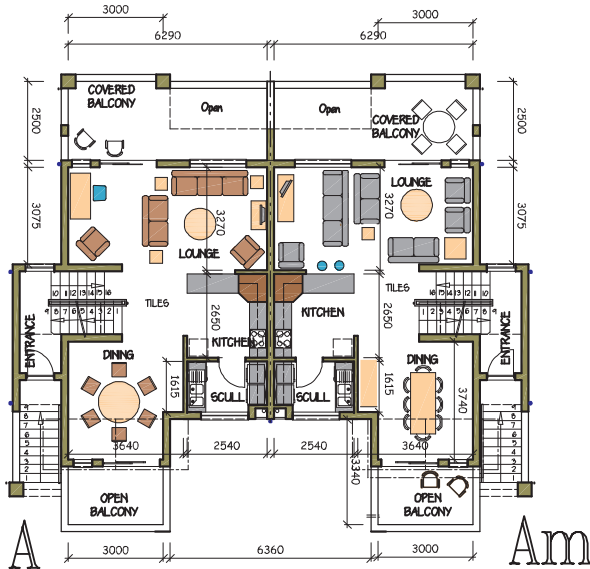
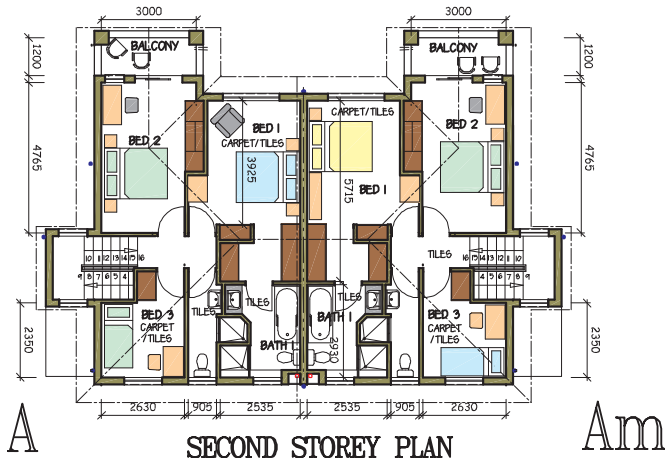
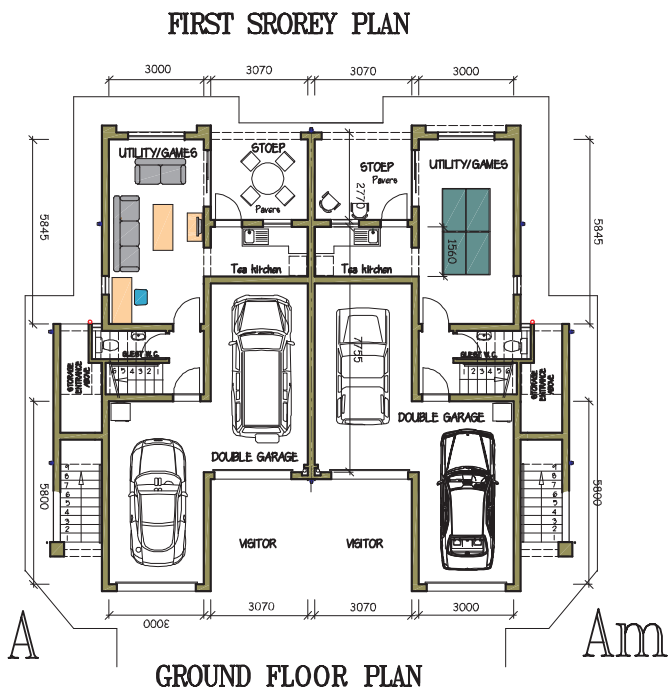


RIVERBEND

ESTATE @ KYALAMI



GROUND FLOOR	82,50m ²
STOEP	8,81m ²
FIRST FLOOR	63,16m ²
COVERED STOEP	14,08m ²
SECOND FLOOR	66,61m ²
COVERED STOEP	4,83m ²
HOUSE TOTAL	239,99m²
(to centreline)	
OPEN BALCONIES	
let FLOOR - NORTH	4,74m ²
let FLOOR - SOUTH	7,08m ²



DUPLEX TYPE A & AM