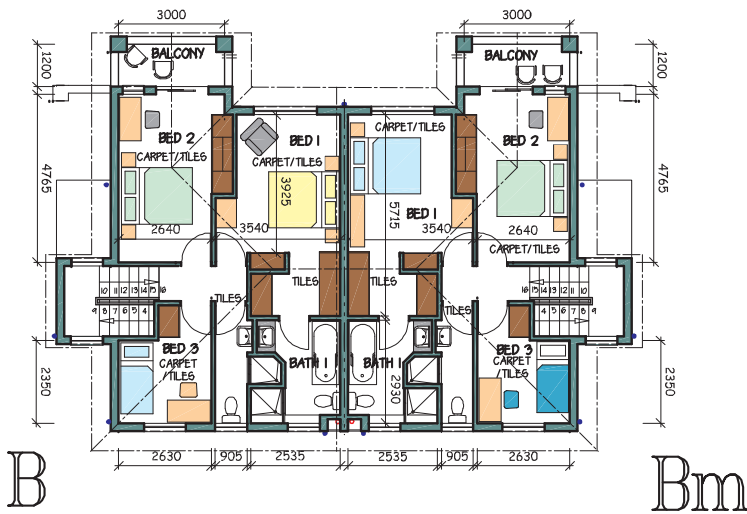
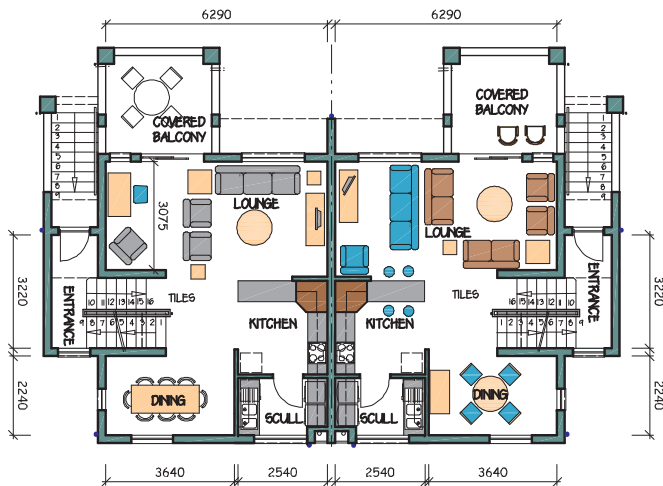


RIVERBEND

ESTATE @ KYALAMI

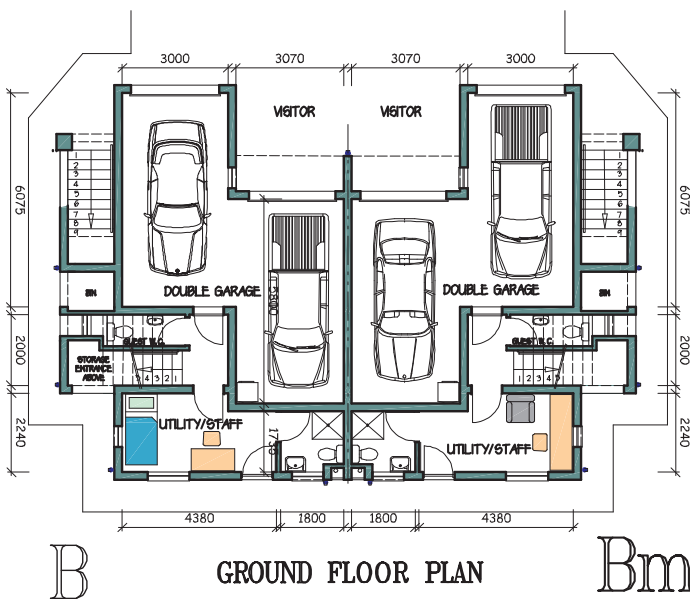


SECOND STOREY PLAN



FIRST STOREY PLAN

GROUND FLOOR	71,86m ²
FIRST FLOOR	59,89m ²
COVERED PORCHES	10,32m ²
SECOND FLOOR	66,61m ²
BALCONY	4,83m ²
HOUSE TOTAL	214,05m²
(to centre line)	



GROUND FLOOR PLAN

DUPLEX TYPE B & BM