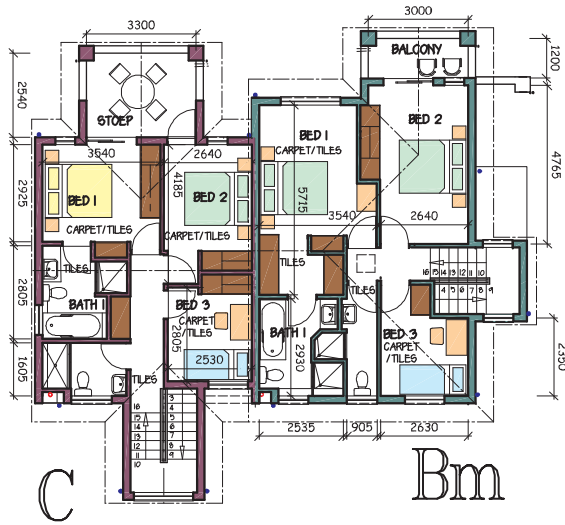


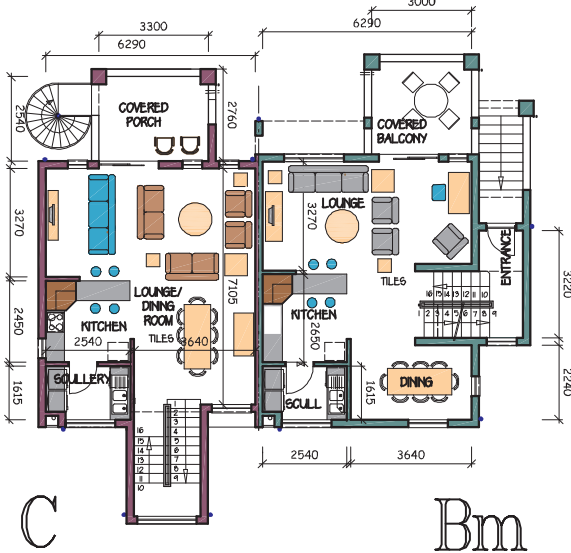
# RIVERBEND

ESTATE @ KYALAMI



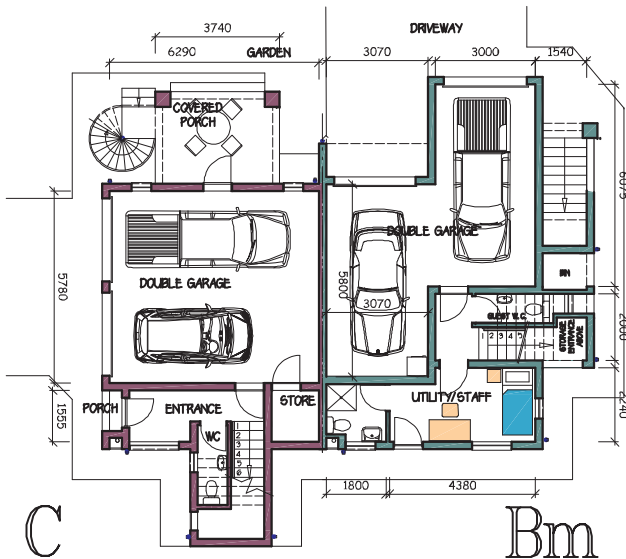
SECOND STOREY PLAN

GROUND FLOOR	60,02m <sup>2</sup>
COVERED STOEP	10,32m <sup>2</sup>
FIRST FLOOR	59,38m <sup>2</sup>
COVERED BALCONY	10,32m <sup>2</sup>
SECOND FLOOR	59,38m <sup>2</sup>
COVERED BALCONY	10,32m <sup>2</sup>
HOUSE TOTAL	209,74m <sup>2</sup>
(to centreline)	



FIRST STOREY PLAN

GROUND FLOOR	71,86m <sup>2</sup>
FIRST FLOOR	59,89m <sup>2</sup>
COVERED PORCHES	10,32m <sup>2</sup>
SECOND FLOOR	66,61m <sup>2</sup>
BALCONY	4,83m <sup>2</sup>
HOUSE TOTAL	214,05m <sup>2</sup>
(to centre line)	



GROUND FLOOR PLAN

## DUPLEX TYPE C & BM